

# CLICKFIT EVO'S 4 BASIC COMPONENTS

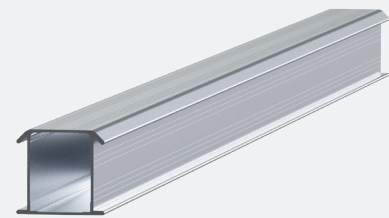
HOOKS OR SCREWS



## 1. UNIVERSAL ROOF HOOK / TRUSS HOOK

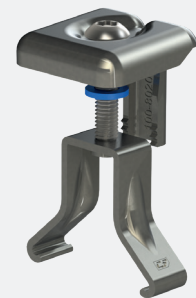
Quick & flexible installation with the ClickFit EVO Universal Roof Hook without screwing. Do you prefer screws? Use the ClickFit EVO Truss Hook. Universal Roof Hook and Truss Hook can be combined in a single roof construction.

- Universal Magnelis® roof hook for all standard tile/batten combinations
- Easy mounting process from the top
- Stepless adjustment of height and width
- Better point load distribution, lower risk of tile breakage and leakage
- Self-aligning click connection: easier and faster
- Can be used for horizontal and vertical mounting
- Integrated cable management



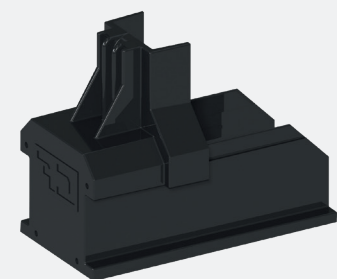
## 2. MOUNTING RAIL

- Quick and easy to click into the ClickFit EVO click connection on the hook
- Available in different lengths
- Rails can be coupled with a coupler



## 3. UNIVERSAL MODULE CLAMP

- Universal module clamp: suitable for solar panels with frame thickness between 30 and 50 mm.
- Can be used as centre clamp or as end clamp in combination with end cap
- Standard assembly
- Including bonding for the solar panels
- Available in grey and black



## 4. END CAP

- End cap holds the module clamp in its position
- Elongated end cap to allow for aesthetically pleasing finish
- Available in grey and black



BAUKOM Bauprodukte GmbH  
Wiesenstraße 50  
74889 Sinsheim-Reihen  
Telefon 07261 / 97 38-0  
info@baukom-group.de  
www.baukom-group.de



**THE NEW  
STANDARD FOR  
MOUNTING ON  
PITCHED ROOFS**



**BUILDING VALUE FOR  
SOLAR PROFESSIONALS**

Esdec  
Londenstraat 16  
7418 EE Deventer  
The Netherlands

+31 850 702 000  
info@esdec.com





## MOUNTING HAS NEVER BEEN EASIER

### ClickFit EVO; universal and fast

Esdec developed ClickFit EVO specifically for the professional solar installer. The mounting system consists of 4 components that can be used to mount all conventional solar panels on any tiled roof. Thanks to its unique properties, this mounting system allows for a mounting process that is twice as fast.

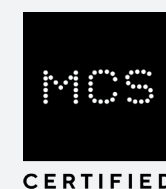
### Mounting method of your choice; hooks or screws

With the hook and click technique of ClickFit EVO, you can easily, quickly and safely install solar panels on a tiled roof. The ClickFit EVO Universal Roof Hook eliminates the need to drill holes in the roof construction, allowing the roof construction of the end user to stay fully intact. The universally adjustable roof hook fits all standard roof tile/ batten combinations. The integrated water barrier reduces the risk of leaks.

Do you prefer screwing into the truss? Use the ClickFit EVO Truss Hook. This system consists of a hook with a wider top plate that can be screwed onto a truss, tile or roof boarding. This offers flexibility in the placement and attachment of the truss hook. You can also combine the ClickFit EVO Universal Roof Hook and Truss Hook in a single project.

### Flexible and easy mounting process

If you work with ClickFit EVO, one tool is all you need. The revolutionary hook and click technique eliminates the need for other tools. Thanks to the smart design of this innovative mounting system, you can place the panels both in landscape or portrait orientation.



### ClickFit Evo for tiled roofs is MCS certified

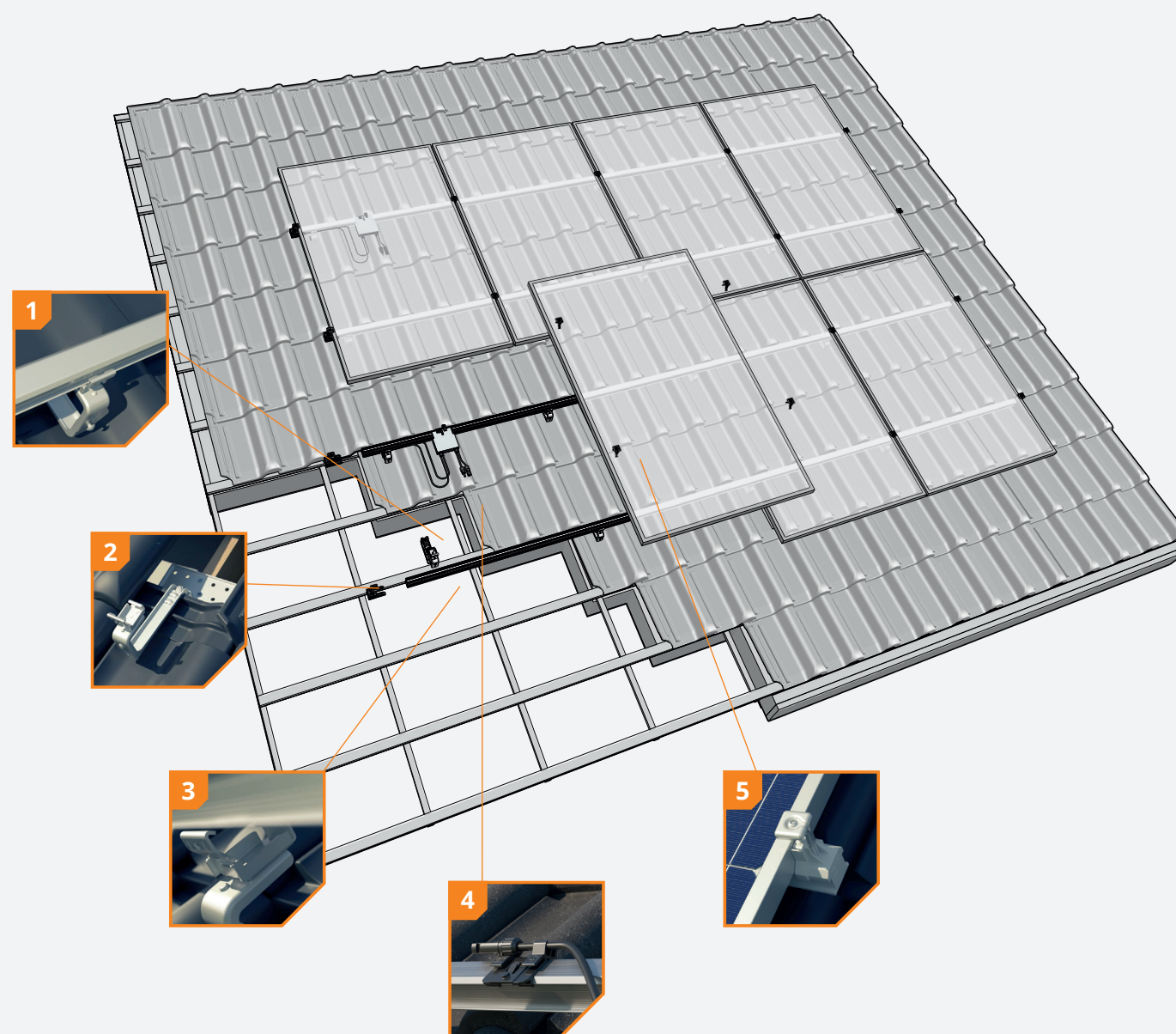
ClickFit Evo for tiled roofs, both in the version with the truss hook and the version with the universal hook, is MCS certified. Meeting MCS recognised industry standards proves the high quality, competency and compliance of ClickFit Evo for tiled roofs.

#### BENEFITS FOR THE INSTALLER

- ✓ Up to 40% quicker mounting
- ✓ Only 4 components
- ✓ Only 1 tool necessary
- ✓ 20-year product warranty

#### BENEFITS FOR THE END USER

- ✓ Rock solid basis for solar panels
- ✓ The roof stays intact
- ✓ Reliable
- ✓ 20-year product warranty



- 1 Universally adjustable
- 2 Screw option possible
- 3 Patented ClickFit EVO click connection
- 4 Integrated cable management
- 5 Always the right measurements

The universal Magnelis® roof hook is infinitely adjustable to fit all standard roof tile/ batten combinations. In addition, the hook is infinitely adjustable to suit all common types of tiles and roof curves.



ClickFit EVO can also be mounted with a screw-mounted roof hook, when clamping with the roof hook is not an option. Both variants can also be used jointly in a project in line with each other.

The ClickFit EVO roof hook features a self-aligning click connection. As a result, the mounting rail is always quick and easy to assemble.


Cables and connectors are neatly and securely held in place in the roof hook. You can also simply click the optimizer or micro-inverter onto the rail with the MLPE clip.

The universal module clamp is adjustable in height and therefore suitable for solar panels with a frame thickness between 30 and 50 mm. Due to its smart design, this panel clamp can be used as a mid clamp and as an end clamp (in combination with the end cap).





### ROOF FASTENERS

-  ClickFit EVO Universal Roof Hook 1008040
-  ClickFit EVO Truss Hook 1008045







### MOUNTING RAIL

-  ClickFit EVO Mounting rail 1008131
- Mounting rail 1188mm 1008131
- Mounting rail 2338mm 1008132
- Mounting rail 3488mm 1008133
- Mounting rail 3500mm 1008007
- Mounting rail 4638mm 1008134
- Mounting rail 5770mm 1008135

### MODULE CLAMP & END CAP

-  ClickFit EVO Module Clamp Universal grey 1008020
-  ClickFit EVO Module Clamp Universal black 1008020-B
-  ClickFit EVO Mounting rail End cap grey 1008060
-  ClickFit EVO Mounting rail End cap black 1008060-B

### ACCESSORIES

-  ClickFit EVO Mounting rail Coupler 1008061
-  ClickFit EVO MLPE Clip Light Weight up to 2kg 1008067
-  ClickFit EVO MLPE Clip Heavy Weight from 2 to 8kg 1008068
-  ClickFit EVO Roof hook Spacer 1008063
-  ClickFit EVO Auxiliary set with cable clip 1008064
-  ClickFit EVO Self drilling screw 6,3x42mm SW10/T30 1003016 (required for vertical rail installation)

## Calculator

In the Esdec calculator you can manage and calculate all your projects, for both pitched and flat roofs. One platform with all Esdec mounting systems for the most reliable calculation of your project.

- ✓ Save time: manage all your projects on one platform
- ✓ One calculator for projects on pitched and flat roofs
- ✓ All calculations are based on extensive testing and the latest safety standards

Unlimited calculations: use the calculator for your own project calculations without limits on the roof height. The calculator also takes into account the terrain category, snow load and wind zone to provide accurate advice, specific to your project.

Go to [esdec.com/en/calculator](https://esdec.com/en/calculator)



## Warranty

ClickFit EVO meets all of the requirements and standards that currently apply. ClickFit EVO comes with a unique 20-year warranty, thus ensuring the system's quality.

- ✓ Use of premium materials
- ✓ Extensively tested
- ✓ 20-year product warranty

